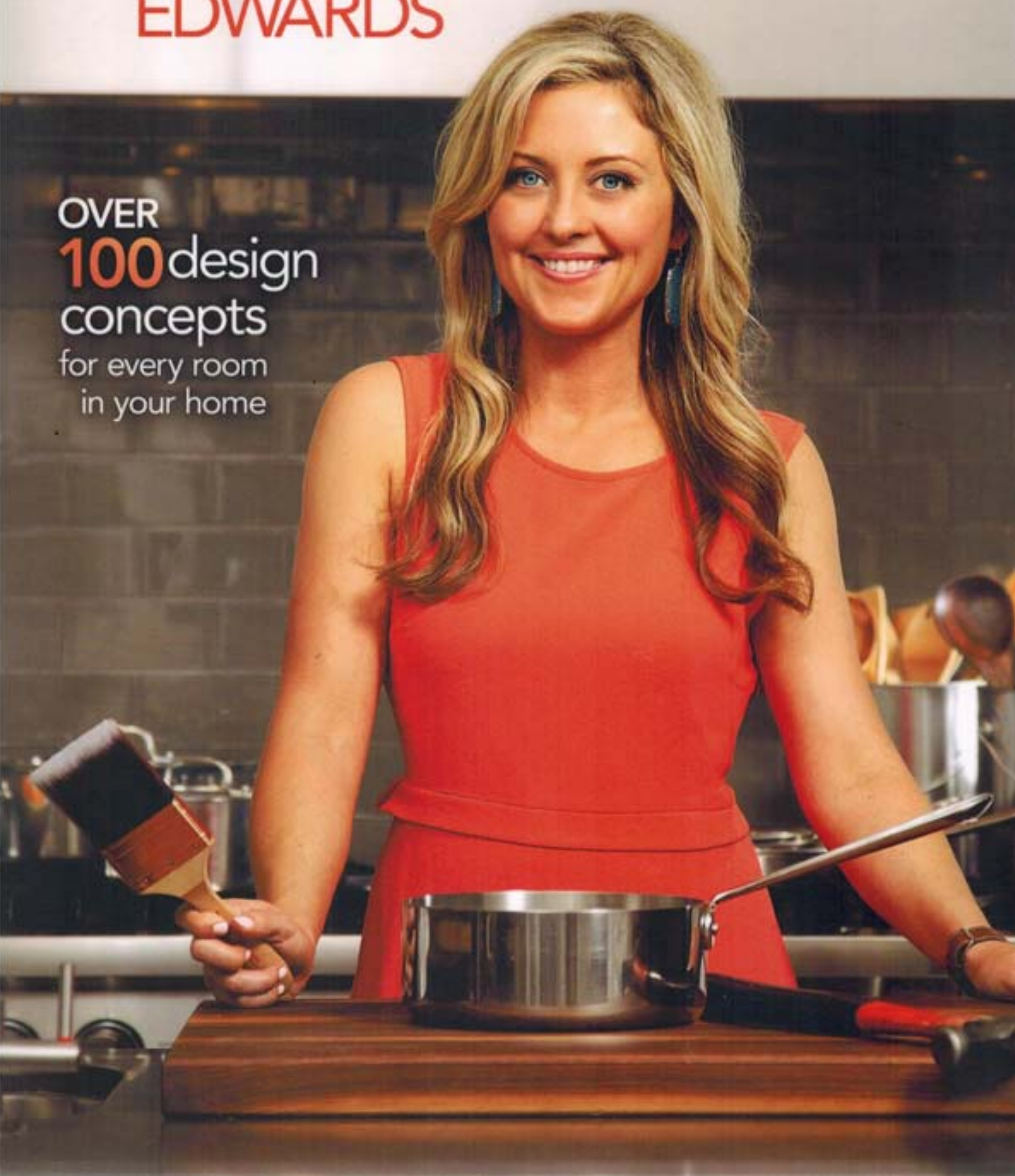


# The Design Cookbook

Recipes for a Stylish Home

KELLY  
EDWARDS

OVER  
**100** design  
concepts  
for every room  
in your home





Heather Scott's breakfast nook is a comfortable take on the traditional banquette. I love her use of soft upholstered chairs and a settee to create a peaceful retreat for the family to come together during the day. It's like bringing the living room to the dining room.

## INGREDIENTS

One-by-Five-Inch Wall Boards (Shiplap)

White and Pale-Blue Paint

White Linen Fabric for Roman Shades

Sea Grass Rug

Round Glass-Top Table

Durable White Furnishings: Slipcovers and Teflon-Treated Materials

Punchy Pillows

Pair of Floor Lamps

Candleholder Chandelier

## RECIPE

**STEP 1:** Transform a builder beige Sheetrock room into a cozy nook by applying tongue-and-groove shiplap wall paneling. Paint it bright white to make a small room feel larger, and paint the ceiling the palest blue to open it up and evoke the sky.

**STEP 2:** Purchase solid white linen fabric, cording, and wood board to make timeless Roman shades. It's quick and easy to do at home.

**STEP 3:** Add a simple sea grass rug to keep the room from looking too formal. All these elements create a white, bright, and neutral envelope to develop a coastal-inspired retreat in your home.

**STEP 4:** A round glass-top table is perfect for a small space. It keeps the room feeling open and gives you the flexibility to seat two to six people.

**STEP 5:** Mix up the seating by using a settee instead of traditional dining chairs to make the space more comfortable. In addition to being a place for family meals, this is now a great space for reading the paper and drinking coffee, working on your computer, or enjoying a glass of wine while chatting with friends. Durable velvet is used on the settee cushions, while the frame is covered in linen. Accent pillows add a punch of color to the room and can easily be changed seasonally or over time as your tastes change.

**STEP 6:** Add a pair of unique floor lamps to bring symmetry and balance to the room, making the setting pleasing to the eye. To save money on hiring an electrician, opt for a unique candleholder in place of a hand-wired chandelier.

**HEATHER'S DESIGNER TIP:** Make sure all the furniture materials are easy to care for by adding Teflon coating to the fabric before the furniture is made to protect it from spills or ink.